

THE ENTERTAINER MK 2

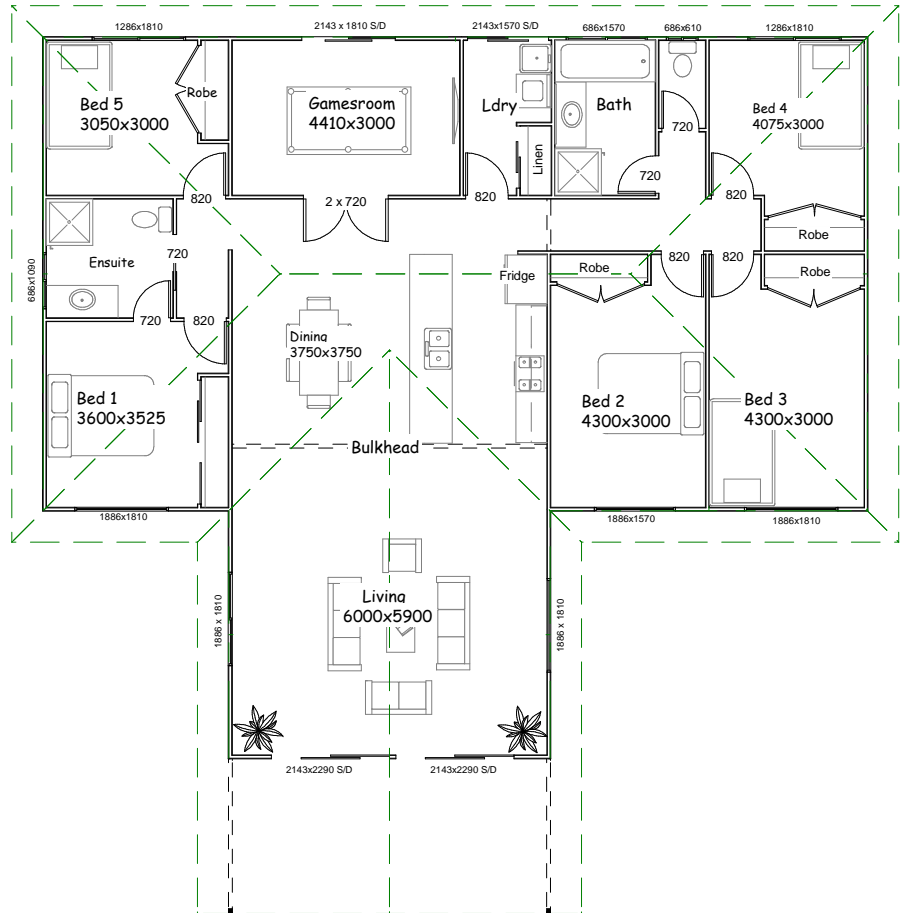
177sqm Living area

Retaining the open plan living concept from the original Entertainer this incarnation simply gives you more!

The ultimate family home or the perfect holiday home?

It's up to you with this impressive list of features.

Five large bedrooms with built in robes, two bathrooms, a spacious activity room, raked ceilings over a generous living area, plus a deck that caters for R&R, serious socializing, or taking in the views of your block.



Price is for the home on a concrete slab supplied by the Owner Builder. Stumped floor system not included.



© This design is strictly the property of Statewide Building Solutions Pty Ltd and shall not be copied or used without their written permission.